

# (iMultiView)

## User manual

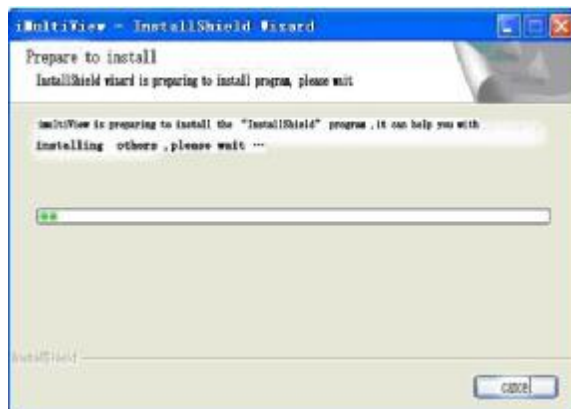
This is a convenient controlling view software. Every IP Camera with an attachment of iMultiView software, which is the iMultiView software can support controlling multi-IP Camera. The user can real-time manage and long-distance control multi-IP Camera from many different areas through the iMultiView, meanwhile, can transmit IP Camera real-time status through the email.

### 1、drive installation

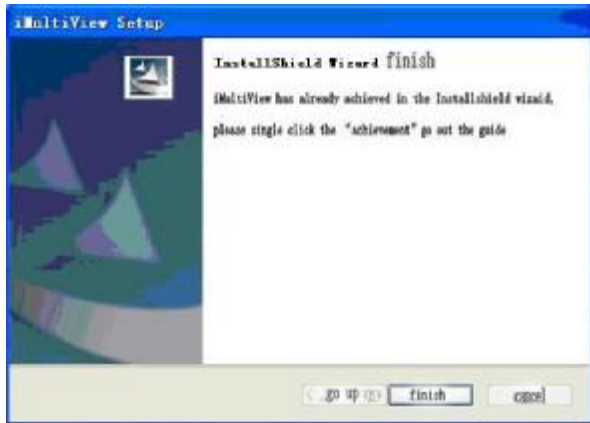
(a) insert the attachment drive cd IP CAMERA, and click the iMultiView.



(b) It is setting iMultiView



(c) Please single click "achievement", "the iMultiView" has already set up your system

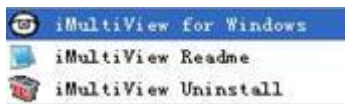


(d) When it achieved ,please check the icon in your menu

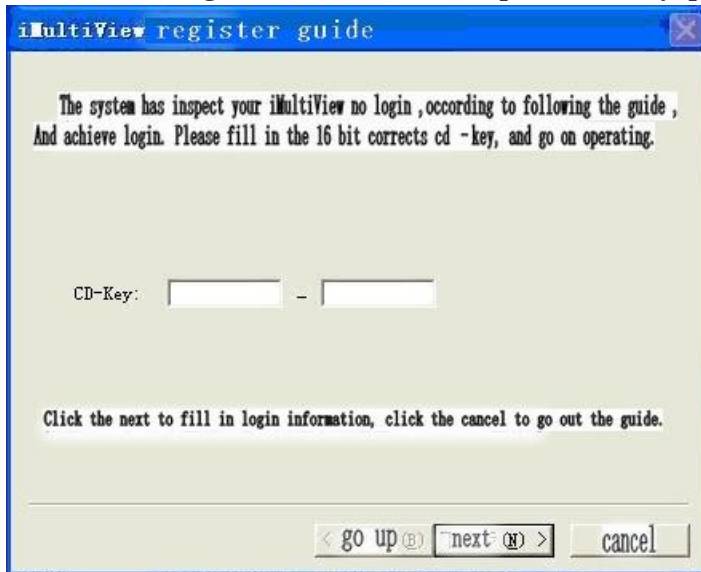


## 2、iMultiView software application

first click the eye ,open the iMultiView



**Illuminate :** using the iMultiView must input the CD key ,please contact the distribution .



After Completing the cd key entering into following window, please chose and fill in the county area and email .

**iMultiView register guide**

Please achieve the flowing information

1. your name / your company name:
2. country or area:
3. email:
4. product: iMultiView
5. sequence NO.: BCYHRQML-1VDFZ9R0
6. software version: 4.00
7. remark:

click the previous to return to the cd -key page ,click the next will submit the information to server,  
click the cancel will exit the iMultiView login guide.

< go up   next >   cancel

click the previous to return to the cd -key page ,click the next will submit the information to server,

click the cancel will exit the iMultiView login guide.

achieve login

**iMultiView register guide**

Completement iMultiview login

Click achievement , start Multi-view login operating

< go up   finish   cancel

(a) Make sure into software

**Login**

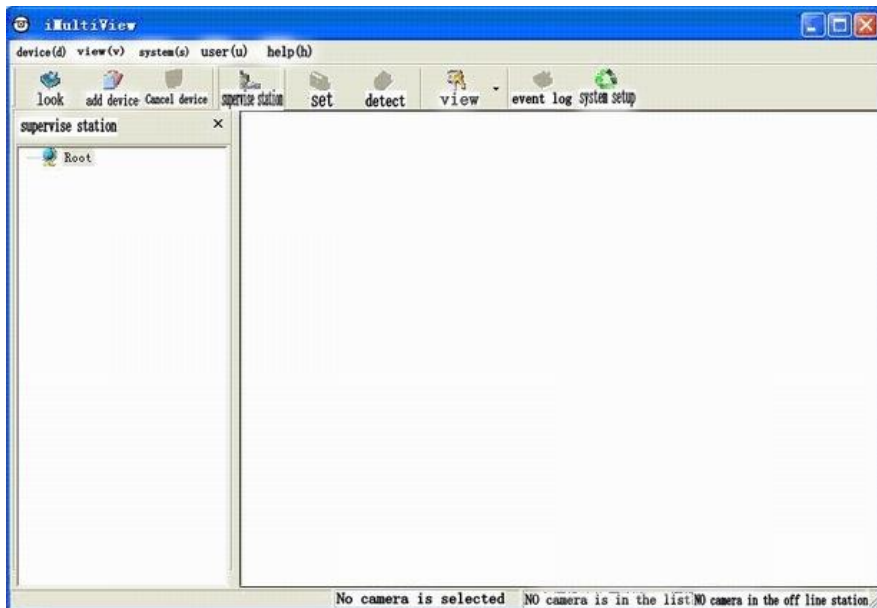
Account information

Name (N):

password (P):

Confirm   cancel

(b) iMultiView operating interface



(b1) device



Looking for device: looking for a IP CAMERA in the same Router

Adding device: looking for the IP CAMERA what you know in the wise

① **Basic setting:** can looking for through the IP Camera address or video server

i : through the **IP Camera address**

Host computer add: input IP Camera Domain Name or IP add

Ip Camera port: inside fixed value:9001",it msut be the same value setting in the IP Camera

page

ii : **through kinescope server**

Kinescope server add: input IP Camera server add.for example: <http://icv99.net>

Kinescope server port no.: inside fixed value:9001",it must be the same value setting in the IP Camera page

IP Camera account: input the account applying in the kinescope server

IP Camera password: input the password applying in the kinescope server

② **camera**

Setting the relative value of IP Camera in this

Chose A or B camera; account and password :please input password and account what seting

in the IP Camera page.

### image configure

**Kinescope display multiple:** setting size proportion of kinescope display :25%-200%

**Camera lens spin angle:** setting if need the kinescope the camera spin display.

**The most transmitting view frame per second:** setting how many frame does transmit the camera kinescope per second.

Level image: setting if need the image echo display

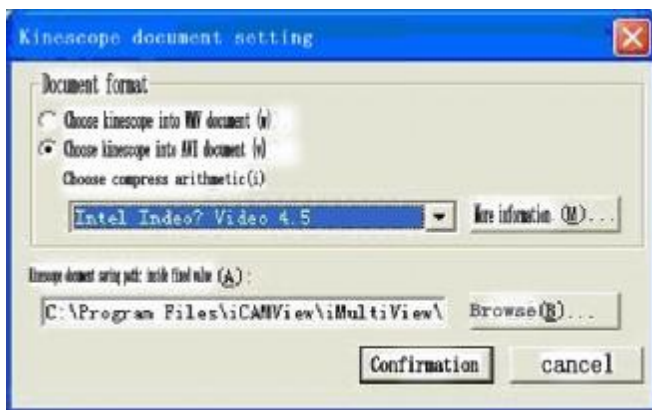
### ③ Motion detect

Startup motion detect function: please choose that you can start this function.

**Remark: this function work after opening the kinescope window**

Sensitivity: setting value 0%-100%( high sensitivity)

Kinescope: choose “when find the motional object and start to kinescope



Choose compress arithmetic : choose “more information” and you can choose other compress format through pull-down menu

Remark: the compress format in the menu is different from the code which is in the user computer.

Kinescope document saving path: inside fixed value :

C:\Program Files\iCAMView\iMultiView\movie, choose” browse “ and can change the deposited path

Stop kinescoping while how long not to detect the moving object, setting value : 1-100second .

Transmitting the AVI notification through email, sending the AVI which is kinescoped through the moving kinescoping function

### ④ Mail setting : setting the relative parameter of email notification function

**Please correctly set** the relative parameter of “the transmitter information”,IP Camera will send correctly information with email.

SMTP server request authentication : if your email server need password authentication, please Set the name and password which can come into the following window .

Email notification :setting the relative parameter of email receiver ,please press “add “ to come into the window which can put into email information of email receiver .

### ⑤ Administrator setting : if you have no host computer name ,you don't need fill in ; the HTTP port is the camera port no.

### ⑥ Setting time kinescope : please choose you can start the function

**Kinescope time gap** : figure inside fixed value is 1-30,the unit is day or hour

**The first group , the second group kinescope time can set**

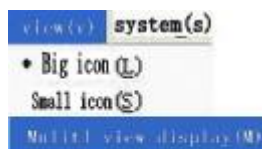
**The document format you can refer to the above “motion detect-kinescope “**

Browsing: after choosing the IP Camera on the main menu, enforcing “browse “function , you can come into the IP Camera page

Educe current config : after choosing the IP Camera on the main menu ,enforcing the “Educe current config” function, you can save the relative parameter of IP Camera into dat document .

Enter new config :after choosing the IP Camera on the main menu ,enforcing the Enter new config function, you can enter the outer setting document into the IP Camera

(b2)、check: click and choose this function can switch the images iCAMView logo



display

① big icon



②small icon

Host computer	icanview port	Camera	host computer name	working time	system manager	address
ip2506.332...	9001	A Camera				(ID: 2)
192.168.1.8	9003	A Camera	WebCA...	0-0:50:44	Administ...	My Office...

③can watch iMultiView at the same time iMultiView



Looking over cycle: the gap time of looking over

Setting time kinescope: setting the most kinescope number which can support, please fill in the integer from 1 to 30

### The limit of Setting kinescope document size

The most document size: can set 0-6G

The longest kinescope: can set 0-24 hours

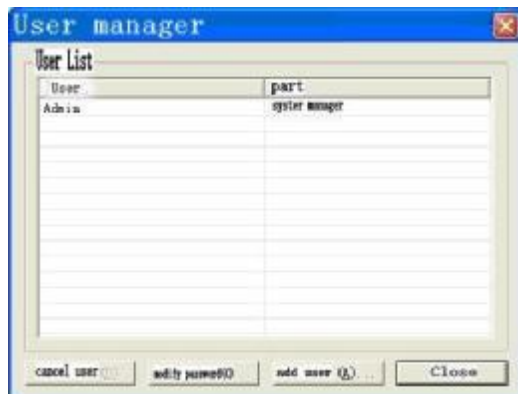
### (b4) name



① modification password



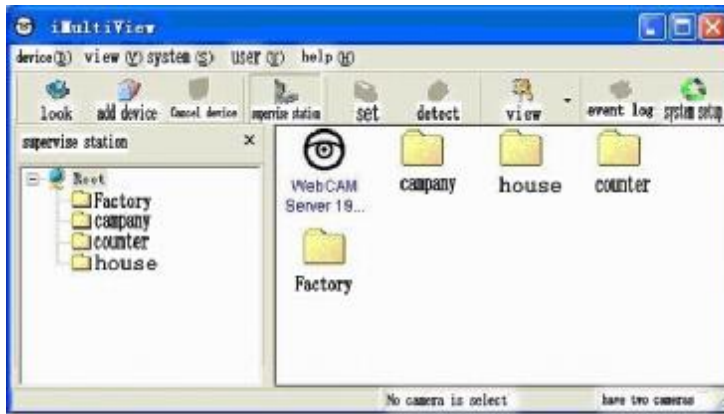
② user manage: can add users , can be divided into users and admin.



③

User manager : can add user, set the authority which can be administrator and user.

The toolbar icon function is as the same above



Observe : this function can observe the kinescope of the IP Camera camera, please choose the IP Camera which you want to observe, and choose the “observe”function, now you can see the view of the long-distance photographed



Pressing the key, can set the IP Camera ,and start to kinescope image of long-distance camera.( you can refer to the above of the operating description of “moving view detect”)



The view turn left right



Choose the key can directly connect into the page “parameter setting, you can do relative setting.



Full screen display( again pressing the “ESC” you can return to the original page



Setting the camera turn left 1degree/ setting the camera turn left 5 degree



Setting the camera turn right 1 degree/ setting the camera turn right 5 degree



Setting the camera turn up 1degree/setting the camera turn up 5 degree



Setting the camera turn down 1degree/setting the camera turn down 5 degree



Setting the camera turn right/left /up/down autorotation detecting

Remark: the above turn left, turn right, turn up, turn down function, the camera must possess the function.